

[www.honestygroup.co.in](http://www.honestygroup.co.in)

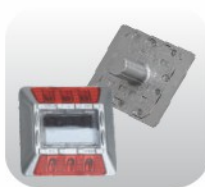
# TOTAL SAFETY PRODUCTS

when safety is first,  
you last.



Manufacturing & Import by :

**HONESTY<sup>®</sup> Automation Pvt. Ltd.**  
(A Unit of Honesty Group)





**H**onesty Group has held a lead position in manufacturing as well as exporting, and installing Entrance Automation Systems, parking system, and security system that are problem free and easy to operate. All our products are designed and manufactured with Indian collaboration using innovative and creative engineering technology. The product development team uses the latest technology combined with advanced machinery & software to offer our customers an excellent engineered product. To ensure superior quality and operational efficiency the company has a state of the art manufacturing Unit In India of More then 10,000 sq. Foot The Company Provider **MAKE IN INDIA** Product. Established Year **2009**.



## Vision

To be a name that is synonymous with entrance automation & parking solutions.

## Mission

We bring success to our clients, continuously contribute towards enhancing their corporate value, care for people and deliver results through innovation



## Main results

### 2009

Honesty Safety Foundation,  
Started with Industrial Safety Products,

### 2010

Co-operated with companies in China & Taiwan for Adding Road Safety  
Products to Enhance the Business

### 2012

Co-operated with companies overseas for Introducing  
Marine Safety Products – Lifebuoy and Life jacket.

### 2013

In House some major product manufacturing in India  
like Stanchion Post (Q Manager), Dust Bin, Plastic & Rubber Moulded Road Safety Products.

## Our Group of Company:

- ◆ Honesty Automation PVT .LTD.
- ◆ Honesty Group

## Index



04,05 | Stanchion Post (Q Manager) and Accessories



06 | Traffic Cones



07 | Traffic Cones Accessories



08 | Flexible Posts Lane Block



08 | Solar Flasher



09 | Solar Delinators



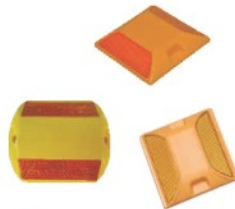
09 | Solar Chevron, Solar Speed Sign, Solar Traffic Blinker



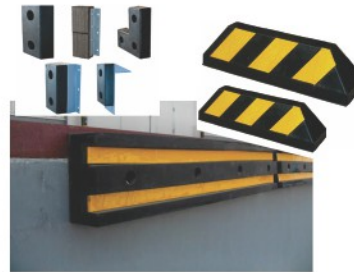
10 | Convex & Dome Mirror



11 | Plastic Speed Breaker Rubber Speed Breaker



12 | Road Stud & Reflectors



12 | Warehouse & Rubber Products



13 | Parking Safety Accessories



14 | Traffic Baton



14 | Marine Safety Equipments



15 | Traffic Flashers



15 | Wheel Lock



15 | Solar Road Studs



16 | SS. Dustbin & Plastic Dustbin



17 | Water Filled Barriers



19 | Other Road Safety Products



## Stanchion Post (Que Manager Manufacturing by us)



Honesty Group Leading Manufacturer, Exporter, Wholesaler, Bulk Order Executor and Supplier of Stanchion Post Manager in Manufacturing Unit Lucknow & Delhi (India), Q Manager is Made of stainless steel (SS) body with heavy base comprising retractable Belt / Ribbon 2.75 Meters (Length as per requirement) To Ribbon 3 Meters length with inter locking feature with color Available in Red/ Blue/ Black / Orange / Green. Message/ logo printing can also be done at additional cost. Q Manager also called as SS Q Manager/ Stainless Steel Q Stand / Crowd Control Stanchion Post / Queue Management System / Q Up Barricade Stand / Crowd Control Barricade Pole / Queue Barriers / Queue Manager with Belt or Ribbon. Que Manager of Honesty are used in Airports, Hospitals, Events, Banks, Hotels, Railway Stations, Metro Stations, Retail Outlets, Shopping malls, Temples, Car Show Rooms, Clubs, Theaters and Multiplexes. Q Manager helps solve this problem by providing its varied range of solutions and it can be installed anywhere managing the crowd of People. More Than 20+ Model Are Available all Product Manufacturer in India

### Specification : (as per your customization\*)

Material: Stainless Steel SS 202 / SS 304 Grade.

Belt Width: 50 MM & Length: As per your requirement.

Belt Type: Retractable Belt / Retractable with Anti-Breaking System (Optional)

Belt / Ribbon: Synthetic with Custom Color, Screen & Digital Print options available.

Connectivity: 3 Receiving Points & 1 Delivery Point for 4 way connectivity.

Weight: 7 Kg's (opt.) / 10 Kg's / 12 Kg's / 14 Kg's Approximate.

1Belt / Ribbon Color: Red/ Blue/ Black / Orange / Green



### Stanchion Post Eco HGI-Eco+

1. Diameter of Pole : 63mm
2. Belt Size : 2mtr, as per your requirement
3. Height of Pole : 1000mm
4. Base : 320X320mm



### Stanchion Post Supreme HGI-Sup+

1. Diameter of Pole : 51mm
2. Belt Size : 2.75mtr
3. Height of Pole : 895mm
4. Base : 360X360mm
5. Special Feature: U Cover-convenient for foldable, dismountable, convenient for packing



### Stanchion Post Supreme HGI-Sup+

1. Diameter of Pole : 51mm
2. Belt Size : 2.75mtr
3. Height of Pole : 895mm
4. Base : 360X360mm
5. Special Feature: U Cover-convenient for foldable, dismountable, convenient for packing



### Stanchion Post Heavy Duty HGI-ECO+

1. Diameter of Pole : 75mm
2. Belt Size : 3.75mtr
3. Height of Pole : 910mm
4. Base : 320X320mm



### Stanchion Post Classic HGI-CP+

1. Diameter of Pole : 51mm
2. Height of Pole : 950mm
3. Base : 320X320mm
4. Color:SS with Titanium (Gold/Silver)



### Stanchion Post with Screen HGI-SCR+

1. Diameter of Pole : 51mm
2. Height of Pole : 985mm
3. Base : 320X320mm



### Stanchion Post Supreme HGI-Sup+

1. Diameter of Pole : 51mm
2. Chain Size : 2.75mtr
3. Height of Pole : 895mm
4. Base : 360X360mm
5. Special Feature: U Cover-convenient for foldable, dismountable, convenient for packing



### Stanchion Post Double Belt

1. Diameter of Pole : 63mm
2. Belt & Chain Size : 2mtr x 2
3. Height of Pole : 910mm
4. Base : 320X320mm



### Wall Mounting Unit

1. Belt Size : 2mtr
2. Diameter of Post : 63mm
3. Stick Sheet : 115X105mm



## Stanchion Post and Accessories (Imported)



Stanchion Post, Sign Stand, Screen Sign Stand Are Basically Used At Airports, Hotels, Hospitals, Malls, Cinema Halls, Counters, Etc. For Queue Management And Displaying Useful Information To Customers



### Stanchion Post Eco HGI-Eco

1. Diameter of Pole : 63mm
2. Belt Size : 2mtr, 2.75mtr
3. Height of Pole : 1000mm
4. Base : 320X320mm



### Stanchion Post Supreme HGI-Sup

1. Diameter of Pole : 51mm
2. Belt Size : 2.75mtr
3. Height of Pole : 895mm
4. Base : 360X360mm
5. Special Feature: U Cover-convenient for foldable, dismountable, convenient for packing



### Stanchion Post Heavy Duty HGI-HD

1. Diameter of Pole : 75mm
2. Belt Size : 3.75mtr
3. Height of Pole : 910mm
4. Base : 320X320mm



### Stanchion Post Double Belt

1. Diameter of Pole : 63mm
2. Belt Size : 2mtr x 2
3. Height of Pole : 910mm
4. Base : 320X320mm



### Stanchion Post Classic HGI-CP

1. Diameter of Pole : 51mm
2. Height of Pole : 950mm
3. Base : 320X320mm
4. Color:SS with Titanium (Gold/Silver)



### Stanchion Post with Screen HGI-SCR

1. Diameter of Pole : 51mm
2. Height of Pole : 985mm
3. Base : 320X320mm



### Velvet Rope HGI-vr

1. Diameter of Hook : 32mm
2. Length of Rope : 1.5mtr
3. Color : Red/Blue



### Sign Stand

1. Size : A4,A3
- 2.A4 : 215X315mm
- 3.A3 : 425X305mm



### Wall Mounting Unit

1. Belt Size : 2mtr
2. Diameter of Post : 63mm
3. Stick Sheet : 115X105mm



## Traffic Cones & Accessories



### Traffic Cones - (Small)

HG-500(mm), Weight : 1Kg, Base Hexagonal Sleeve WidthHG-4 inch

#### Features :

- Can be used to mark where children are playing or to block off an area
- Easy to move or remove
- Use with other Accessories like Light Bar Reflector, Message Plate



### Traffic Cones - (Rubber Base)\

HG-750(mm), Weight : 2Kg, Base -380x380 (mm), Sleeve WidthHG-4 / 6 inch

#### Features :

- For night time use or low-light situations traffic cones are usually fitted with a retro reflective sleeve or increase visibility
- Used to create separation or merge lanes during road construction projects or automobile accidents etc.
- Use with other Accessories like Light Bar, Reflector, Message Plate, Caution Tape etc.



### Traffic Cones -

HG-750(mm) Weight : 1.2/3.5Kg, Base -380x380 (mm), Sleeve WidthHG-4inch

#### Features :

- Also available with heavy weight base fixed at the bottom, due to which it does not fly-off with fast traffic or winds.
- Temporary barricading at Hotels. Hospitals, Railway Stations, Airport, Bus Terminals . Etc



Traffic Cones - (Sand Filled) HG-700(mm), Weight : 2 Kg, Base -Hexagonal, Sleeve WidthHG-4 inch

#### Features :

- Use with other Accessories like Light Bar, Reflector, Message Plate, caution Tape etc.
- Are usually cone-shaped markers that are placed on roads or footpaths to temporarily redirect traffic in a safe manner



### Traffic Cones -

HG-750(mm) Weight : 4.5 Kg, Base -Hexagonal, Sleeve WidthHG-4+2 inch

#### Features :

- Used with other Accessories like light bar, reflector, message plate, Caution Tape etc.
- We can use cone-connecting rod to make ti use as a barricade.



### Traffic Cones -

HG-700(mm), Weight : 2.5Kg, Base -380x380 (mm) Sleeve-Full Reflective

#### Features :

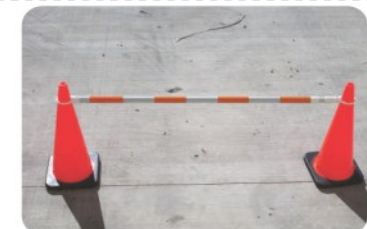
- Full Reflective increases high visibility at night.
- Rubber Cone does not have nay chances of fading.



Traffic Cones - 710(mm) Weight : 3.2/4.5 Kg, Base -380x380 (mm), Sleeve-8 Inch

#### Features :

- Made of Special PVC material making them highly flexible and durable
- HGI PVC Traffic Cones are made up of Fluorescence Orange PVC Cone Body and Black Base. The two interlock as single inseparable piece



Traffic Cones - HGIHFLEX910 HG-910(mm), Weight : 4.5 Kg, Base -490x490 (mm), Sleeve-8 Inch

#### Features :

- Made of Special PVC material making them highly flexible and durable
- HGI PVC Traffic Cones are made up of Fluorescence Orange PVC cone body and Black Base. a The two parts interlock as single inseparable piece.
- Used with other Accessories like Light Bar, Reflector, Message Place, Caution Tape etc.





## Traffic Cones & Accessories



**Traffic Cones - HXC1000**  
HG-1000(mm), Weight : 4.5 Kg, Base -Hexagonal, Sleeve-8 Inch

Features :

- Made of Special PVC Material making them highly flexible and durable.
- HGI PVC Traffic Cones are made up of Fluorescence Orange PVC Cone Body and Black Base. The two parts interlock as single inseparable piece.
- Used with other Accessories like Light Bar, Reflector, Message Plate, Caution Tape etc.



**Traffic Cones - HGIRB1000**  
HG-1000(mm), Weight : 5 Kg, Base 490X490 mm, Sleeve-10 Inch

Features :

- Two part cone base and rubber, can be dismantle and fit easily
- Heavy Duty



**Retractable Traffic Cone - HGIRTC**  
HG-450/750(mm), Base 250x250x40 mm

Features :

- Easy Installation
- Maintenance Free
- Light Weight
- Durable
- Chemical and Weather Resistant



**Cone Message Plate - HGICMP**  
Size : 300x600 mm or as per you choice

Features :

- Can be fix/remove on cone very easily
- Any message can be planned
- Reflective Message can be planned.



**Cone Connecting Chain - HGICCC**

Features :

- Can be connect easily with any cone
- Any colour combination is possible



**Retractable Traffic Cone Topper - HGIRTCT**  
Width: 2 Inch, Belt Length: 3 Mtr.

Features :

- Can be fix/remove on cone very easily
- Barricade Immediately
- Used to make queue



**Cone Connecting Rod - HGICCB Series**  
Length: Open 2 Mtr., Close 1 Mtr

Features :

- Can be Fix/Remove on cone very easily
- High Reflective at night.
- Length can be increase or decrease very easily
- Good for barricading or block a space.





## Flexible Posts Lane Block



**PE Flexible Post - HGIPPE HG-750(mm), Diameter : 75 mm.**  
**Reflective Tape : 3 Inch x 3 Pcs**

Features :

- Use for Center Lane Division Dangerous U-Turns etc.
- Use in Parking Lots to make multiple lanes.



**PU Flexible Post - HGIFPPU1 HG-750(mm), Diameter : 75 mm.**  
**Reflective Tape : 3 Inch x 3 Pcs**

Features :

- Used at dangerous medians, Construction areas etc.
- 3 Nos. in built holes for fixing of the spring post with nails. It does not deviate by strong hitting impact after installation



**PU Flexible Post - HGIFPPU2 HG-710(mm), Diameter : 75 mm.**  
**Reflective Tape : 3 Inch x 2 Pcs**

Features :

- Two highly Reflective Tape bands are provided to enhance the night time visibility for fast moving vehicles.
- Extremely flexible & soft posts so as not to damage the vehicle at collision and to be restored. soon to its to original shape



**Lane Separator- HGILS Size: Lx250 Wx750 Hx75 (mm)**

Features :

- Ideal for Merges, Eliminating prohibited left turns, Circles, work zones and bicycle lane protection.
- Emergency vehicle can cross over separators without losing control.
- Excellent Durability and low Life cycle costs.



**Plastic Bollard / Delineator Post- HGIPB1100**  
**Height 100 (mm), Weight: 7kg,**  
**Base : Hexagonal Rubber**

Features :

- Higher Visibility area than cones.
- Can be interlined with Chain



**Model No : HGI-SU309**

Solar Flasher HGI-SU309 Series is new innovative solar safety light, it comes with amazing useful accessories which can apply in most situation.



**Model No: HGI-SU311-5**

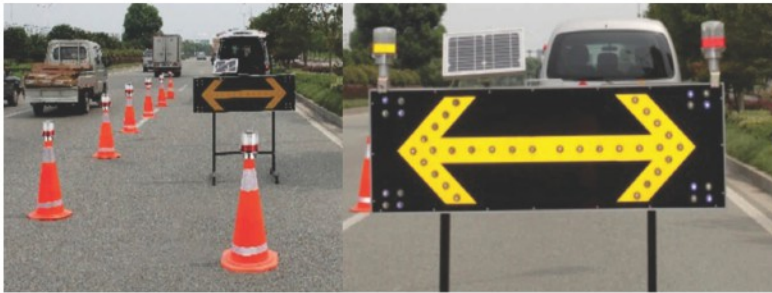
Solar Flasher HGI-SU311 is new innovative Solar Safety Light different from HGI-SU309 having loads of functions with option of solar as well as handy rechargeable in case of no sunlight.

ModelNo.	HGI-SU309	HGI-SU311-5
Size	22.5cm(H)X18cm(D)	23.2cm(H)X18cm(D)
Material	Frame:PP Shell:AS	Frame: ABS,Shell:PC
Led's	4pcs	9pc
Photo Control	Yes	Yes
Function	FlashG-Steady-Close	Multifunction
360Degree Swivel Head	Yes	Yes
Lens	Double	Single





## Traffic Flashers & Traffic Solar Lights



Model No  
Size  
Material  
Solar Panel  
Battery  
Backup  
Water Proof  
Color  
Led's  
Application

**HGI-SU156**  
85,95,125 mm(D)X150,  
Polycarbonate & ABS  
Mono crystalline 4V, 300ma  
2X1.2 Volts, 1600 mAh  
36 hours after full charge  
IP67  
Red/Yellow/Blue/White/Green  
3,4,6,8,12  
Cones, Bridges, Barriers etc.



## Solar Chevron, Solar Speed Sign and Solar Traffic Blinkers



### Solar Chevron Moving

Model No : HGI-SCM

Size Availability : 900(mm) x 600(mm) x 52 (mm), 750(mm) x 600(mm) x 52 (mm), 600(mm) x 450(mm) x 52 (mm)

### Solar Speed Sign

Model No : HGI-SPS

Size : 1200 (mm) x1200 (mm) x 52(mm), 900 (mm) x1200 (mm) x 52(mm), 600 (mm) x 600 (mm) x 52(mm)

### Solar Traffic Blinker

Model No. : HGI-STB

Size : 450 (mm) x 150(mm) x 180(mm)– 100mm (window size), 250 (mm) x 250(mm) x 425(mm)– 200mm (window size)  
365 (mm) x 365(mm) x 185(mm)– 300mm (window size), 470 (mm) x 470(mm) x 570(mm)– 400mm (window size)

Model No  
Led's  
Display Thickness  
Blink Frequency

**HGI-SCM**  
117-130 Red, Yellow, Green  
Aluminum/ACP 2mm  
40-50 per minute

**HGI-SPS**  
50-130 Red, Yellow, Green  
Aluminum/ACP 2mm  
60 to 72 per minute

**HGI-STB**  
61Led's  
Same  
40 per minute



## Convex & Dome Mirrors

Convex mirrors are used at blind curves, parking lots, basements to give visibility of the approaching vehicle from the other side.



Half Dome Convex Mirror - HGIHFDCM  
Sizes : 26"/65CM, 32"/80CM

Full Dome Convex Mirror - HGIFDCM  
Sizes : 26"/65CM, 32"/80CM



Convex Mirror - HGICM  
18"/45CM      24"/60CM

Material : Polycarbonate  
32"/80CM

Lens : Ubreakable  
40"/100CM

48"/120CM

## DOOR FRAME METAL DETECTOR

Some more Models	
Ultrascan	Weapon Scanners



## SEARCHLIGHT



## UNDER VEHICLE SEARCH MIRROR





## Plastic & Rubber Speed Breakers



Speed breakers are traffic calming devices installed in Accident Prone Areas.

Plastic Speed Breakers - HGIPB50-1

Size : L500 x W 400 x H 50 (mm)



Plastic Speed Breakers - HGIPB75-1

Size : L750 x W 250 x H 75 (mm)



Plastic Speed Breakers - HGIPB50-2

Size : L350 x W 250 x H 50 (mm)



Plastic Speed Breakers - HGIPB75-2

Size : L500 x W 400 x H 75 (mm)



Rubber Speed Breakers - HGIRB75-1

Size : L500 x W 425 x H 75 (mm)



Rubber Speed Breakers - HGIRB50-4

Available Sizes : L500 x W 350 x H 42 (mm)

L500 x W 350 x H 50 (mm)

L500 x W 400 x H 50 (mm)

L350 x W 250 x H 50 (mm)



Rubber Speed Breakers - HGIRB75-2

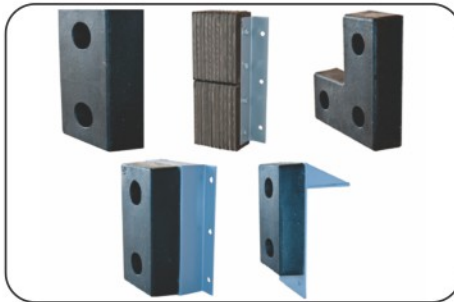
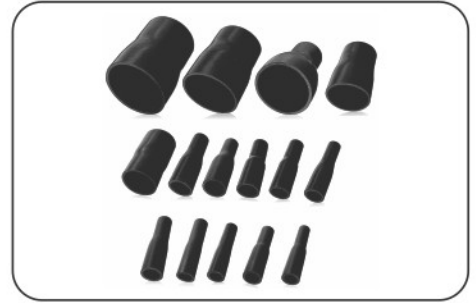
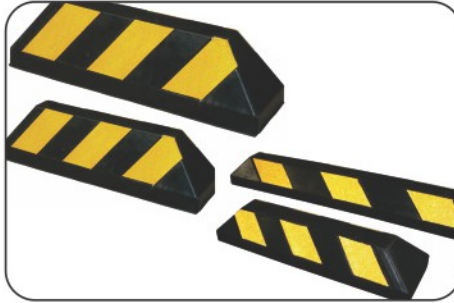
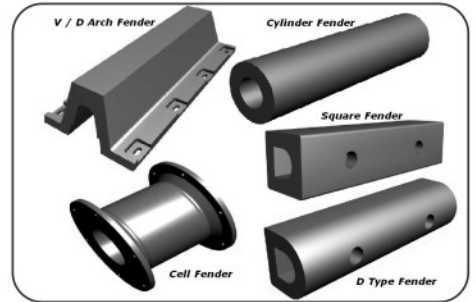
Size : L500 x W 550 x H 75 (mm)



Speed breakers are traffic calming devices installed in Accident Prone Areas.



## Warehouse & Rubber Products



## Other Range of Products

- Fixed Pot Bearing
- Free Sliding POT/PTFE Bearing
- Guided POT / PTFE Bearing
- Elastomeric (Neoprene) Bearings
- Neoflon Sliding Bearings
- Sesimic Restrainer (Vertical)
- Expansion Jonts
- EPDM Pad for RE Wall

- Molded & Extruded Products
- All types of Rollers for Industrial, Printing & Plastic Industries
- Rubber sheets, Electrical Matting as per IS 5424/69 / Conveyor Belts
- PVC Water Stoppers.
- Marine Fenders
- Traffic Safety Products



## Parking Safety Accessories

Corner guards also known as column protectors are best suited for basement parking to avoid damage from & to vehicles.

- Yellow & Black, attractive in the day & night.
- Embedded with highly reflective all weather resistance reflective material.
- Manufactured from flexible & high strength rubber
- Easy installation and durable product.
- International standard bright colours effectively catch the drivers.
- Fixing is with 6mm anchor bolts.



Plastic Corners  
Guard - HGIPCG  
Size : L800 (mm)

Rubber Corners  
Guard - HGIRCG-L  
Size : L800 / 1000  
/ 1200 (mm)



Rubber Corners  
Guard - HGIRCG-O  
Size : L 500 / 900 (mm)



Car Stoppers - HGICS  
Size : L 500 x W 160 x H 125(mm)

Car Stoppers prevent cars from pulling too far into residential or commercial parking spaces and visibly mark each parking space. These car stoppers prevent vehicles from damaging sidewalks, buildings, curbs, and landscaping. In addition to parking lots and outdoor parking spaces, our car stoppers may also be used in garages to prevent the driver from pulling too far forward.

### WALL GUARD



### COLUMN GUARD



### PILLAR GUARD





## Marine Safety Equipments

Marine safety is concerned with the protection of life and property through regulation, management \ and technology development of all forms of waterborne transportation. Our marine and offshore equipments are specially designed to save your life in the most terrifying of situations that may arise at beaches and other sea.



### Lifebuoy

A lifebuoy, ringbuoy lifering, lifesaver or lifebelt also known as a "kisby ring" or "perry buoy", is a lifesaving buoy designed to be thrown to a person in the water, to provide buoyancy, to prevent drowning.

### Technical Specifications

1. Crust : Low pressure Polyethylene
2. Inner Material : Hard PU
3. Outer Diameter : 720mm
4. Inner Diameter : 440mm
5. Weight :  $\geq 2.5\text{kg}$
6. Buoyancy :  $>14.5\text{kg}$



### Lifejacket

A life jacket is a type of personal flotation device designed to keep a person's airway clear of the water whether the wearer is conscious or unconscious.

### Technical Specifications

1. Outside material : Terylene
2. Inside Material : PE Foam
3. Buoyancy :  $>10.5\text{kg}$





## Traffic Flashers & Solar Blinker



**HGI900RG**  
 Diameter : 4 cm  
 Length : 54 cm  
 Battery : Two D-Battery/Rechargeable  
 No of Led's 12  
 Raw Material Used :  
 Pipe - PVC  
 Handle - ABS



**HGI950RG**  
 Diameter : 3 cm  
 Length : 28 cm  
 Battery : Three AA Battery  
 No of Led's 19  
 Raw Material Used :  
 Pipe - PVC  
 Handle - ABS



**HGI3025**  
 Width : 25 cm  
 Length : 30 cm  
 Battery : Three AA Battery  
 Raw Material Used :  
 Pipe - PVC  
 Handle - ABS



**HGI-210C**  
 Battery : Two D  
 No of Led's - 3 Red + 3 Blue  
 Usage :  
 1. Can be fit / remove on cone very easily  
 2. Works Dusk to Dawn to save Batteries



**HGIAB07**  
 Diameter : 3 cm  
 Length : 28 cm  
 Battery : Tree AA Battery  
 No. of LED's : 19  
 Raw Material Used :  
 Pipe - PVC  
 Handle - ABS



**HGI-1020R**  
 Diameter : 9.5 cm  
 Height : 13 cm  
 Battery : Two D  
 No of Led's 8  
 Material : PVC and ABS  
 Usage :  
 1. Magnet on back make it fit on any metal.  
 Like Car, Barrier etc.  
 2. 180 Degree movement and Pocket Fitting  
 3. Work dusk to dawn to save batteries



**HGI-ST121**  
 Diameter : 10 cm  
 Height : 5 cm  
 Battery : Three AA  
 No of Led's : 12 Pcs  
 Material : PVC and ABS  
 Usage :  
 1. Magnet on back make it fit on any metal. Like Car, Barrier etc.  
 2. 180 Degree movement and Pocket Fitting

## Wheel Lock / Tyre Lock / Tyre Clamp



### HGI-TL

A wheel clamp, also known as wheel boot or Denver boot is a device that is designed to prevent vehicles from being moved. In its most common form, it consists of a clamp that surrounds a vehicle wheel, designed to prevent removal of both itself and the wheel.

#### Technical Details

Weight : 2.5 KG  
 Tyre width : 175/225mm  
 Material : Steel  
 No. of Keys : 2

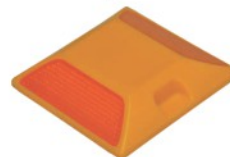


### ABS Road Studs - HGIRS-2

Size : L100 x W 100 x HG10 (mm)

#### Features

- Parking Zones
- Speed Breakers
- Road Signal Junctions



### ABS Road Studs - HGIRS-1

Size : L 115 x W 90 x H19 (mm)

#### Features

- Center Lane Marking
- Edge Lane Marking

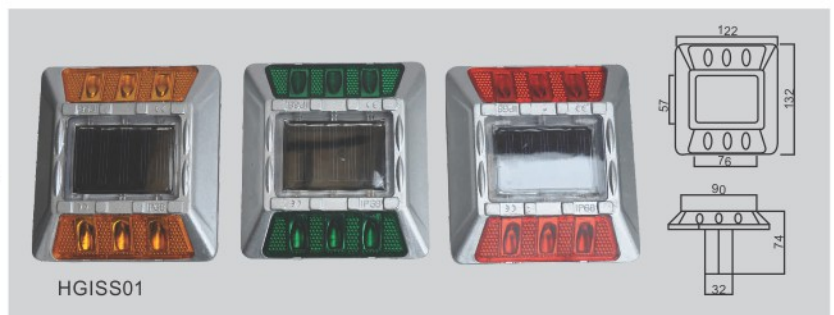


### ABS Road Studs - HGIRS-3

Size : L 100 x W 100 x HG10 (mm)

#### Features :

- Diversion of the Roads
- Pedestrian Zebra Crossings
- Epoxy filled at the bottom for strength



The Solar Road Stud is a unique, innovative and state-of-the-art road safety device, powered by the sun. It provides a clear, visible traffic guidance round-the-year. These studs function automatically, from dusk to dawn and do not rely on reflected light from vehicle headlights.



## SS. Dustbin



**Solid Bin**

7" x 10"  
8" x 12"  
10" x 14"



**Perforated Bin**

7" x 10"  
8" x 12"  
10" x 14"



**Planter**

10" x 10"  
12" x 12"  
14" x 14"  
15" x 15"



**Ashcan**

8" x 24"  
8" x 28"  
10" x 24"  
10" x 28"  
12" x 28"  
14" x 28"



**Push Can**

8" x 16"  
8" x 28"  
10" x 18"  
10" x 28"  
12" x 32"  
14" x 32"



**Ashcan**

8" x 24"  
8" x 28"  
10" x 24"  
10" x 28"  
12" x 28"  
14" x 28"



**Pedal Bin**

7" x 10"  
8" x 12"  
10" x 14"  
12" x 20"



**Perforated Bin**

7" x 10"  
8" x 12"  
10" x 14"  
12" x 20"



**Cutlery Holder**

4" x 5"  
4" x 7"



**Hanging  
Swing Bing**



**Hotel Dustbin**



**Pawali**

## Plastic Dustbin



**80 ltrs**



**100 ltrs**



**WHEEL BIN**



**1100 BINS**



**PEDAL BINS**



**OPEN 120 LTRS**



**STAND BIN**



## Water Filled Barriers

Water Ballasted Construction & Pedestrian Barriers bring a new level of convenience and versatility to temporary work zone delineation. Water barriers are safer than traditional alternatives for everyone who has to be around them pedestrians, - motorists and construction workers all benefit from water ballasted barriers. From improved driver guidance in construction zones, to the fact that in a crash, plastic barriers are much safer on impact than concrete. Plastic water ballasted barriers are the way of the future.



Model No: HGI-WFB1000  
Size: 1000 (L) X 800 (H) X 500 (W)



Model No: HGI-WFB1650  
Size: 1650 (L) X 1000 (H) X 650 (W)



Model No: HGI-WFB1325  
Size: 1325 (L) X 850 (H) X 600 (W)



Model No: HGI-WFB2100  
Size: 2100 (L) X 840 (H) X 600 (W)



Model No: HGI-WFB2100EX  
Size: 2100 (L) X 1000 (H) X 600 (W)



Model No: HGI-WFB1125  
Size: 1125 (L) X 400 (H) X 400 (W)



Model No: HGI-WFB1640  
Size: 1640 (L) X 1000 (H) X 400 (H)



Model No: HGI-WFB1140  
Size: 1140 (L) X 620 (H) X 275 (W)



Model No: HGI-WFB1000  
Size: 1000 (L) X 760 (H) X 350 (W)



Model No: HGI-WFB1060  
Size: 1060 (L) X 855 (H) X 350 (W)



Model No.: HGI-BF2020  
Size: 2020 (L) X 1265 (H) X 20 (W)



Model No.: HGI-BF2160  
Size: 2160 (L) X 1000 (H) X 40 (W)



Model No.: HGI-RF1850  
Size: 1850 (L) X 1885 (H) X 440 (W)



Model No: HGI-RLB1275  
Size: 600 (L) X 1275 (H) X 80 (W)



Model No.: HGI-RLB1310  
Size: 450 (L) X 1310 (H) X 195 (W)



## Other Road Safety Products



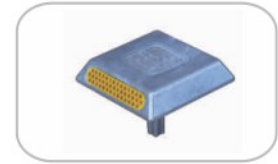
Industrial Helmets



Nose Mask



Industrial Safety Belts



Aluminum Studs



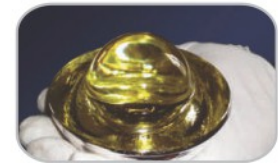
Reflectors



Metal Detector



Metal Delineators



Glass Road Stud



Linear Delineation System



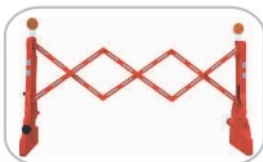
Warning Triangle



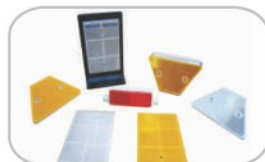
Expandable Metal Barrier



Road Signages



Expandable Plastic Barrier



Gaurd Rail Reflectors



Bull Nose



Bucket Barrier Safety Fence



Cable Protectors



Search Lights



Safety Fence



Caution Tape



Safety Jackets



SS Bin



3M Road Stud



Rubber Flap Delineators



Median Marker



Tree Reflectors



Bridge Reflectors



Floor Stand



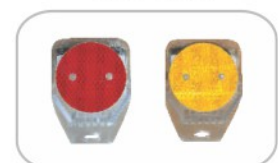
Under Car Mirror



Battery Operated Chevron



Welding Goggles



Solar Guard Rail



